

SANTA MONICA CITY TV

1654 19TH ST

SANTA MONICA, CA 90404

INFORMATION TECHNOLOGY AND SECURITY INFRASTRUCTURE

THESE DOCUMENTS AND THEIR CONTENT CONTAIN INFORMATION PROPRIETARY TO nonzero\architecture AND ARE PROTECTED BY LEGAL COPYRIGHTS. ALL RIGHTS RESERVED. © nonzero\architecture

studio bau:ton
AUDIOVISUAL FACILITIES

RESPONSIBLE PARTY:	LOW VOLTAGE CABLE CONTRACTOR	ELECTRICAL CONTRACTOR	GENERAL CONTRACTOR	OWNER
ITEM OR SERVICE:				
NOTE: SCHEDULE IS FOR REFERENCE ONLY – CONFIRM RESPONSIBILITIES WITH GENERAL CONTRACTOR				
TELECOM FACE PLATES SUPPLIED AND INSTALLED BY:				
BACK BOXES SUPPLIED AND INSTALLED BY:				
CONDUIT SUPPLIED AND INSTALLED BY:				
CONDUIT STUBS INSTALLED BY:				
CABLE TRAY SUPPLIED AND INSTALLED BY:				
LADDER RACK IN COMM ROOMS SUPPLIED AND INSTALLED BY:				
ANCILLARY CABLE SUPPORT SYSTEMS SUPPLIED AND INSTALLED BY:				
PLYWOOD BACKBOARD SUPPLIED AND INSTALLED BY:				
AC DUPLEX OUTLETS SUPPLIED AND INSTALLED BY:				
AC POWER TO RACKS INSTALLED BY:				
GROUNDING CABLE INSTALLED BY:				
AC POWER WITHIN RACKS INSTALLED BY:				
EQUIPMENT RACKS SUPPLIED AND INSTALLED BY:				
CORING PROVIDED BY:				
SLEEVES AND EXPANSION JOINTS SUPPLIED AND INSTALLED BY:				
SURFACE RACEWAY SUPPLIED AND INSTALLED BY:				
TELECOM CABLING (COPPER AND FIBER) SUPPLIED AND INSTALLED BY:				
PULL BOXES SUPPLIED AND INSTALLED BY:				
COMM. ROOM GROUNDING BUS BAR SUPPLIED AND INSTALLED BY:				
MAIN GROUNDING BUS BAR SUPPLIED AND INSTALLED BY:				
TELECOM CONNECTORS SUPPLIED AND INSTALLED BY:				
CROSS CONNECT AND PATCHING HARDWARE SUPPLIED AND INSTALLED BY:				
ACTIVE DATA ELECTRONICS SUPPLIED AND INSTALLED BY:				
ACTIVE TELECOM ELECTRONICS SUPPLIED AND INSTALLED BY:				
TELECOM RELATED FIRE STOPPING SUPPLIED AND INSTALLED BY:				

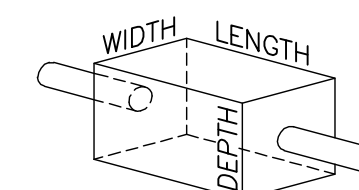
SHEET INDEX	
Sheet Number	Sheet Title
IT-000	COVER PAGE
IT-001	SYMBOLS AND LEGENDS SHEET
IT-002	INTERIOR CABLING DETAILS
IT-540	TELECOM GROUNDING AND BONDING SCHEMATIC SHEET
IT-600	FIRST FLOOR PLAN
IT-601	ATTIC – MECHANICAL AREA FLOOR PLAN
IT-401	ATTIC – MECHANICAL AREA LEVEL TELECOM ROOM
IT-402	BACKBONE CABLE PATHWAY

PULL BOX SIZING									
CONDUIT TRADE SIZE		WIDTH		LENGTH		DEPTH		WIDTH INCREASE FOR ADDITIONAL CONDUIT	
MM	IN	MM	IN	MM	IN	MM	IN	MM	IN
27	1	102	4	406	16	76	3	51	2
35	1-1/4	152	6	508	20	76	3	76	3
41	1-1/2	203	8	686	27	102	4	102	4
53	2	203	8	914	36	102	4	127	5
63	2-1/2	254	10	1067	42	127	5	152	6
78	3	305	12	1219	48	127	5	152	6
91	3-1/2	305	12	1372	54	152	6	152	6
103	4	381	15	1524	60	203	8	203	8

SPLICE BOX SIZING									
CONDUIT TRADE SIZE		WIDTH		LENGTH		DEPTH		WIDTH INCREASE FOR ADDITIONAL CONDUIT	
MM	IN	MM	IN	MM	IN	MM	IN	MM	IN
27	1	300	12	810	32	100	4	75	3
35	1-1/4	355	14	915	36	125	5	100	4
41	1-1/2	450	18	990	39	150	6	100	4
53	2	500	20	1065	42	175	7	125	5
63	2-1/2	610	24	1220	48	200	8	150	6
78	3	760	30	1375	54	225	9	150	6
91	3-1/2	915	36	1525	60	255	10	175	7
103	4	1065	42	1675	66	275	11	175	7

GENERAL NOTES

- THESE DRAWINGS ARE SCHEMATIC AND SHOW THE RELATIONSHIP BETWEEN DEVICES AND CONDUIT. THIS IS NOT A CONDUIT DESIGN. ALL ITEMS NEEDED FOR A COMPLETE INSTALLATION MAY NOT BE SHOWN.
- INSTALLATION MUST COMPLY WITH EIA/TIA STANDARDS 568 (CABLING), 569 (PATHWAYS AND SPACES), 606 (ADMINISTRATIVE), AND 607 (GROUNDING AND BONDING); BICSI INSTALLATION METHODOLOGIES. IN CASE OF CONFLICT AMONG DOCUMENTS CITED, THE MOST STRINGENT REQUIREMENT WILL BE FOLLOWED.
- COORDINATE EXACT DEVICE LOCATIONS WITH ARCHITECT AND OWNER. ALL BOXES SHOWN FOR COUNT PURPOSES ONLY, ARCHITECT DETERMINES EXACT LOCATION.
- MOUNTING HEIGHTS INDICATED ARE TO CENTERLINE OF DEVICE UNLESS OTHERWISE NOTED.
- NO MORE THAN 8" CABLE SAG ALLOWED BETWEEN CABLE SUPPORTS.
- ALL CONDUIT TO BE PROVIDED WITH PULL STRINGS.
- ALL CONDUIT STUBS TO BE PROVIDED WITH PLASTIC BUSHINGS.
- ALL CONDUIT SHALL BE EMT, GALVANIZED STEEL UNLESS OTHERWISE NOTED BY MEP.
- COORDINATE VERTICAL ELEVATION OF ALL PATHWAY SECTIONS, INCLUDING WALL PENETRATIONS. TRANSITIONS TO BE KEPT AT MINIMUM DISTANCES, 2" MAXIMUM. IF FIELD CONDITIONS DO NOT PERMIT THEN USE A CONDUIT WATER FALL. (SEE DETAILS)
- CONDUIT ROUTING INDICATED ON DRAWINGS IS DIAGRAMMATIC. ALL BEND RADII, PULL BOX REQUIREMENTS, SWEEP ANGLES, ETC. ARE TO BE PER EIA/TIA STANDARD 569.
- MIN BEND RADIUS OF SWEEP ELL DETERMINED BY THE TYPE AND DIAMETER OF CABLE TO BE INSTALLED.
 - 11.1. FIBER OPTIC CABLE MINIMUM RADIUS 20x CABLE DIA.
 - 11.2. COPPER CABLE MIN BEND RADIUS 10x CABLE DIA.
- ALIGN MULTIPLE CONDUITS IN SINGLE ROW ALONG WALL UON
- SEE AUDIO VISUAL PLAN SET FOR FINAL LOCATION AND COUNT OF IT DROPS REQUIRED BY AUDIO VISUAL EQUIPMENT.
- ALL RACKS SHALL BE INSTALLED PER MANUFACTURES SPECIFICATIONS USING FASTENERS ADEQUATE FOR THE ANTICIPATED LOAD.
- EXISTING SECURITY SYSTEMS DOOR CONTACTS AND WIRING MUST BE KEPT INTACT FOR FUTURE USE.



1 SCHEDULE OF RESPONSIBILITIES

SCALE: NONE

NO	DESCRIPTION	BY	DATE	NO	DESCRIPTION	BY	DATE
1	PLAN CHECK	JLM	06/04/09				
2	PLAN CHECK	JLM	10/09/09				

KEYPLAN

nonzero\architecture
PETER GRUENEISEN, FAIA

1528 B CLOVERFIELD BOULEVARD
SANTA MONICA CALIFORNIA 90404

310 453 8000 telephone
310 453 8001 fax

info@bau:ton.com
www.nonzeroorch.com
www.bau:ton.com

Acentech
AV | IT | ACOUSTICS CONSULTANT
8 Interplex Dr, Suite 218
Trevose, PA 19053
Voice: (215) 245-8244
Fax: (215) 245-1796

SANTA MONICA CITY TV
1654 19TH STREET, SANTA MONICA, CA 90404

CITY OF SANTA MONICA
PROJECT NO. 6619

PROJECT

COVER PAGE

	01.31.09	
DATE		12-805
		PROJECT NO.
JLM		
DRAWN		
EIS		
REVIEWED		IT-000
AS SHOWN		
SCALE		DRAWING NO.

STAMP

IT-TELECOM DROP
(SUPPLEMENTAL SYMBOL)

POKE THROUGH # [Symbol] SUBSCRIPT

WALL DROP SUBSCRIPT # [Symbol]

CEILING DROP # [Symbol] SUBSCRIPT

FLOOR BOX COMPONENT # [Symbol] SUBSCRIPT

GENERAL SYMBOLS IT-TELECOM DROP [Symbol]

IT-EQUIPMENT TERMINATION DROP [Symbol]

IT-WALL PHONE [Symbol]

ACCESSIBLE [Symbol]

PASS THROUGH [Symbol]

FIRE RATED [Symbol]

NON-FIRE RATED [Symbol]

PATHWAY PENETRATION (LOOKING AT SECTION) # [Symbol] SUBSCRIPT

[Symbol] SUBSCRIPT

[Symbol] SUBSCRIPT

PATHWAY PENETRATION (LOOKING AT SIDE)

[Symbol] SUBSCRIPT

[Symbol] SUBSCRIPT

SECTION VIEW

TOP VIEW

LADDER RACK [Symbol]

TOP VIEW [Symbol]

CABLE TRAY [Symbol]

TOP VIEW [Symbol]

D-RINGS [Symbol]

WALL MOUNT [Symbol]

FLOOR MOUNT [Symbol]

CEILING MOUNT [Symbol]

MISCELLANEOUS USE BLOCK (XXX DENOTES MISC USE)

PAN TILT ZOOM [Symbol]

FIXED [Symbol]

SECURITY CAMERA [Symbol]

101-1 [Symbol] AV
↓
101-1 [Symbol] AV

NOTES-

- # USED TO NUMBER THE ITEM.
- SUBSCRIPT IS USED TO DISTINGUISH SPECIAL TYPE.
- SEE LIST OF ACRONYMS FOR DECODING OF SUBSCRIPT
- GENERAL SYMBOLS GO INSIDE OF SUPPLEMENTARY SYMBOL (EX. A POKE THROUGH TRANSFORMS FROM A TELECOM TO A TELEPHONE SEE EXAMPLES TO LEFT.)

2 GENERAL SYMBOL LEGEND

SCALE: NOT TO SCALE

FIBER OPTIC ACRONYMS AND INFORMATION

FIBER OPTIC CABLE TYPE AND CABLE SHEATH COLOR		
MM	MULTI-MODE, STANDARD PERFORMANCE	ORANGE
MM	MULTI-MODE, LASER-OPTIMIZED, OM3	AQUA
SM	SINGLE-MODE	YELLOW
FIBER OPTIC CONNECTOR PERFORMANCE TYPE AND BACK REFLECTION		
APC	ANGLED PHYSICAL CONTACT	-65 DB
PC	PHYSICAL CONTACT	-40 DB
SPC	SUPER-PHYSICAL CONTACT	-45 DB
UPC	ULTRA-PREMIUM CONTACT	-55 DB
FIBER OPTIC CONNECTOR COLOR CODE		
MM	BEIGE	
SM	BLUE	
SM APC	GREEN	

1 LIST OF ACRONYMS / SUBSCRIPT KEY

SCALE: NOT TO SCALE

TELECOMMUNICATIONS

ACRONYM OR ABBREVIATION	DEFINITION	ACRONYM OR ABBREVIATION	DEFINITION
ABF	AIR BLOWN FIBER	MEP	MECHANICAL, ELECTRICAL, PLUMBING
ATM	ASYNCHRONOUS TRANSFER MODE	MH	MANHOLE (DUCT BANK)
AWG	AMERICAN WIRE GAUGE	MHz	MEGAHERTZ
AV	AV REQUIREMENT FOR TELECOM DROP. COORDINATE WITH AV PLANS	MM	MULTI-MODE FIBER OPTIC CABLE
BAS	BUILDING AUTOMATION SYSTEM	MuTOA	MULTI-USER TELECOMMUNICATIONS OUTLET ASSEMBLY
BC	BACKBONE CABLE OR CABLING	NEC	NATIONAL ELECTRIC CODE
BCS	BUILDING CONTROL SYSTEM	OC	ON CENTER
BE	BOX ELIMINATOR	OC1	OPTICAL CARRIER-LEVEL 1 (51.84 Mbps FIBER OPTIC DATA CIRCUIT)
BICSI	BUILDING INDUSTRY CONSULTING SERVICE INTERNATIONAL	OC3	OPTICAL CARRIER-LEVEL 3 (155.52 Mbps FIBER OPTIC DATA CIRCUIT)
BMS	BUILDING MANAGEMENT SYSTEM	OC12	OPTICAL CARRIER-LEVEL 12 (622.08 Mbps FIBER OPTIC DATA CIRCUIT)
BTU	BRITISH THERMAL UNIT	OSP	OUTSIDE PLANT (CABLING)
CATV	COMMUNITY ANTENNA TELEVISION	PBX	PRIVATE BRANCH EXCHANGE (TELEPHONE)
C	CONDUIT	PABX	PRIVATE AUTOMATIC BRANCH EXCHANGE (SAME AS PBX)
CC	CROSS-CONNECT	PB	PULL BOX
CCTV	CLOSED-CIRCUIT TELEVISION	PBN	PANIC BUTTON
CKT	CIRCUIT	POP	POINT-OF-PRESENCE
CO	TELEPHONE COMPANY CENTRAL OFFICE	POTS	PLAIN OLD TELEPHONE SERVICE (2-WIRE, LOOP-START CIRCUIT)
CODEC	CODER/DECODER (ALSO INCORRECTLY CALLED COMPRESSOR / DECOMPRESSOR)	PR	PAIR
CP	CONSOLIDATION POINT	RCDD	REGISTERED CABLE DISTRIBUTION DESIGNER
CPE	CUSTOMER PREMISES EQUIPMENT	RF	RADIO FREQUENCY
CPU	CENTRAL PROCESSING UNIT	RFI	RADIO FREQUENCY INTERFERENCE
CR	CARD READER	RJ	REGISTERED JACK
CWDM	COARSE WAVELENGTH DIVISION MULTIPLEXING	RMS	RACK MOUNTING SPACE (1.75")
DCT	DOOR CONTACT	RU	RACK UNIT (1.75")
DEMARC	SERVICE PROVIDER DEMARCATION POINT	S	SECURITY REQUIREMENT. IF AVAILABLE SEE SECURITY SET FOR ADDITIONAL INFORMATION
DSL	DIGITAL SUBSCRIBER LINE	ScTP	SCREENED TWISTED-PAIR
DWDM	COARSE WAVELENGTH DIVISION MULTIPLEXING	SM	SINGLE-MODE FIBER OPTIC CABLE
E	COORDINATE WITH ELECTRICAL PLANS	SONET	SYNCHRONOUS OPTICAL NETWORK
EMC	ELECTROMAGNETIC COMPATIBILITY	SSF	SMALL FORM FACTOR FIBER OPTIC CONNECTOR
EMI	ELECTROMAGNETIC INTERFERENCE	STP	SHIELDED TWISTED-PAIR CABLE
EMR	ELECTROMAGNETIC RADIATION	T1	1.544 Mbps DATA CIRCUIT
ER	EQUIPMENT ROOM	T3	44.736 (45) Mbps DATA CIRCUIT
ES	ELECTRONIC DOOR STRIKE	TBB	TELECOMMUNICATIONS BONDING BACKBONE
ELV	ELEVATOR EMERGENCY PHONE	TBBIBC	TELECOMMUNICATIONS BONDING BACKBONE INTERCONNECTING BONDING CONDUCTOR
FA	FIRE ALARM	TC / TELECOM	TELECOMMUNICATIONS
FDI	FIBER DISTRIBUTION DATA INTERFACE	TGB	TELECOMMUNICATIONS GROUNDING BUS BAR
FR	FRAM RELAY	TGMB	TELECOMMUNICATIONS MAIN GROUNDING BUS BAR
GHz	GIGAHERTZ	TR	TELECOMMUNICATIONS ROOM
HC	HORIZONTAL CROSS-CONNECTION	TP	TRANSITION POINT
HH	HAND HOLE (DUCT BANK)	TSER	TELECOMMUNICATIONS SERVICE ENTRANCE ROOM
HVAC	HEATING, VENTILATION AND AIR CONDITIONING	TVSS	TRANSIENT VOLTAGE SURGE SUPPRESSOR
ICC	INTERMEDIATE CROSS-CONNECT	UG	UNDERGROUND
IDC	INSULATION DISPLACEMENT CONNECTION	UON	UNLESS OTHER WISE NOTED
IDF	INTERMEDIATE DISTRIBUTION FRAME (ALSO SEE "HC")	UPS	UNINTERRUPTIBLE POWER SUPPLY
IG	ISOLATED GROUND	USOC	UNIVERSAL SERVICE ORDER CODE
ISDN	INTEGRATED SERVICES DIGITAL NETWORK	UTP	UNSHIELDED TWISTED-PAIR CABLE
KSU	KEY SYSTEM UNIT (TELEPHONE)	VRW	VERTICAL RACEWAY
LAN	LOCAL AREA NETWORK	WAO	WORK AREA INFORMATION OUTLET
MAN	METROPOLITAN AREA NETWORK	WAN	WIDE AREA NETWORK
MC	MAIN CROSS-CONNECT	WAP	WIRELESS ACCESS POINT
MD	MOTION DETECTOR	WP	WEATHER PROOF
MDF	MAIN DISTRIBUTION FRAME		

THESE DOCUMENTS AND THEIR CONTENT CONTAIN INFORMATION PROPRIETARY TO nonzero\architecture AND ARE PROTECTED BY LEGAL COPYRIGHTS. ALL RIGHTS RESERVED. © nonzero\architecture

studio bau:ton
AUDIOVISUAL FACILITIES

NO	DESCRIPTION	BY	DATE	NO	DESCRIPTION	BY	DATE
1	PLAN CHECK	JLM	06/04/09				
2	PLAN CHECK	JLM	10/09/09				

KEYPLAN

nonzero\architecture
PETER GRUENEISEN, FAIA

1528 B CLOVERFIELD BOULEVARD
SANTA MONICA CALIFORNIA 90404

310 453 8000 telephone
310 453 8001 fax

info@bau:ton.com
www.nonzeroarch.com
www.bau:ton.com

Acentech

AV | IT | ACOUSTICS CONSULTANT
8 Interplex Dr, Suite 218
Trevose, PA 19053
Voice: (215) 245-8244
Fax: (215) 245-1796

SANTA MONICA CITY TV
1654 19TH STREET, SANTA MONICA, CA 90404

CITY OF SANTA MONICA
PROJECT NO. 6619

PROJECT

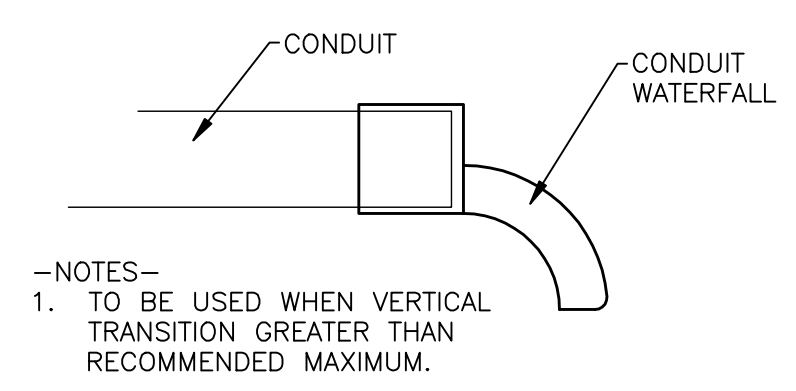
SYMBOLS AND LEGENDS SHEET

DRAWING

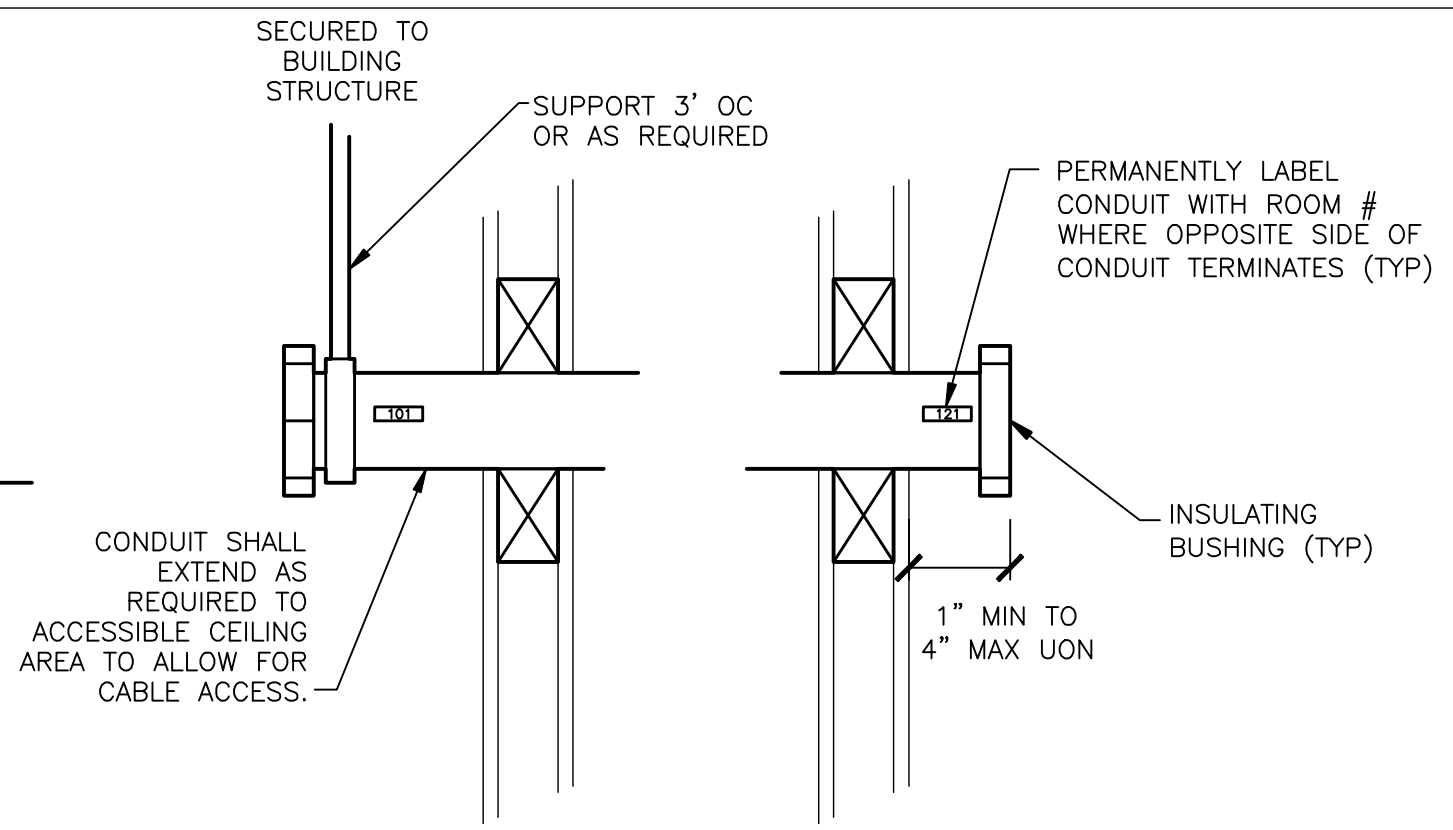
	01.31.09	12-805
DATE		PROJECT NO.
JLM		
DRAWN		
EIS		
REVIEWED		
AS SHOWN		
SCALE		DRAWING NO.

STAMP

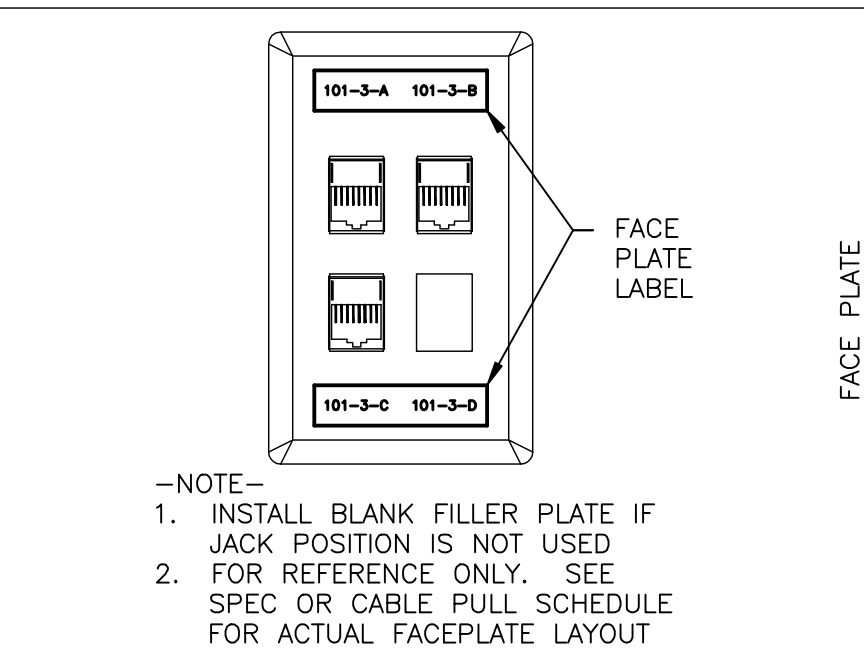
11 TYPICAL CONDUIT WATERFALL DETAIL
SCALE: NOT TO SCALE



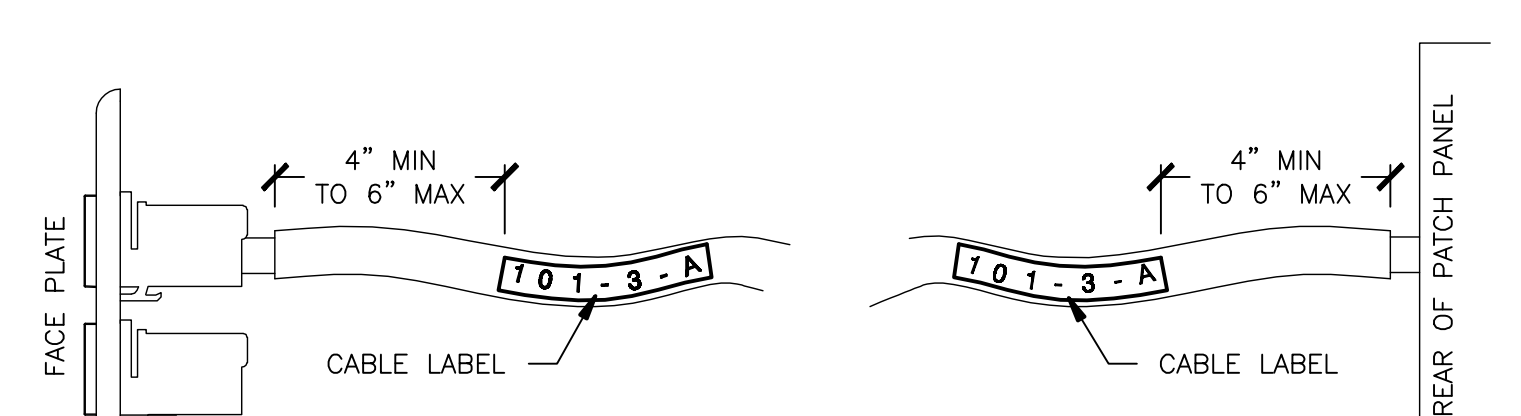
8 MISC CONDUIT DETAIL
SCALE: NOT TO SCALE



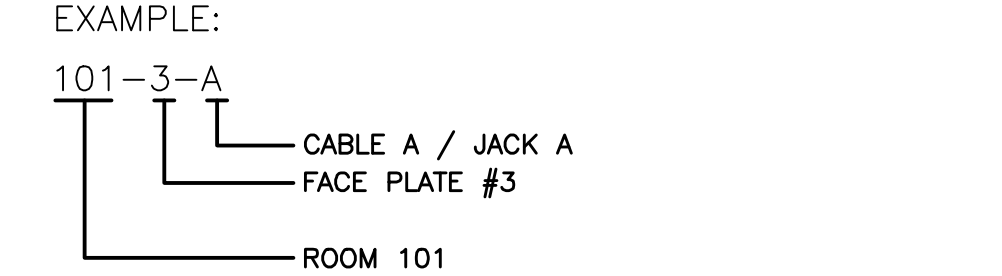
5 FACEPLATE LABEL DETAIL
SCALE: NOT TO SCALE



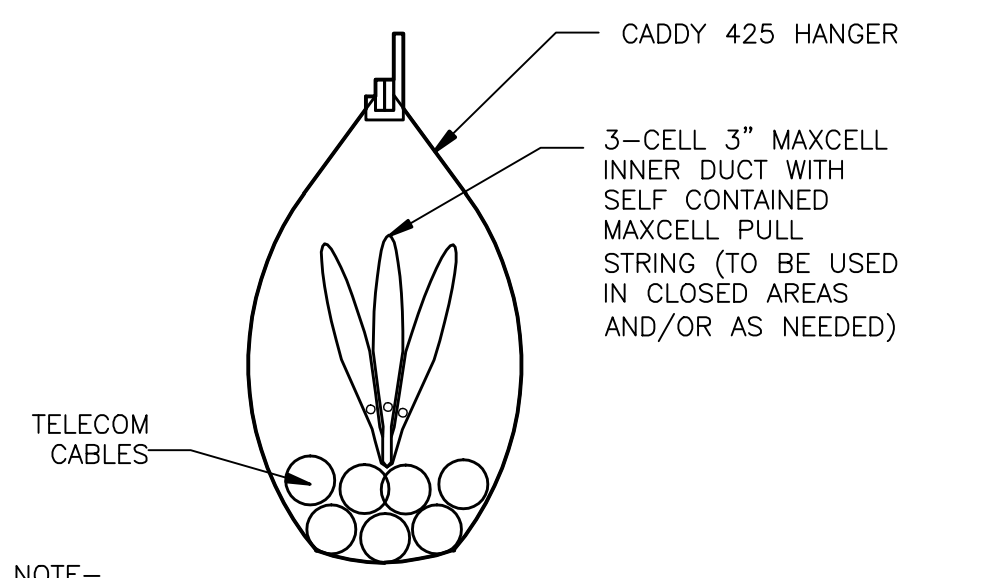
1 CABLE LABEL PLACEMENT DETAIL
SCALE: NOT TO SCALE



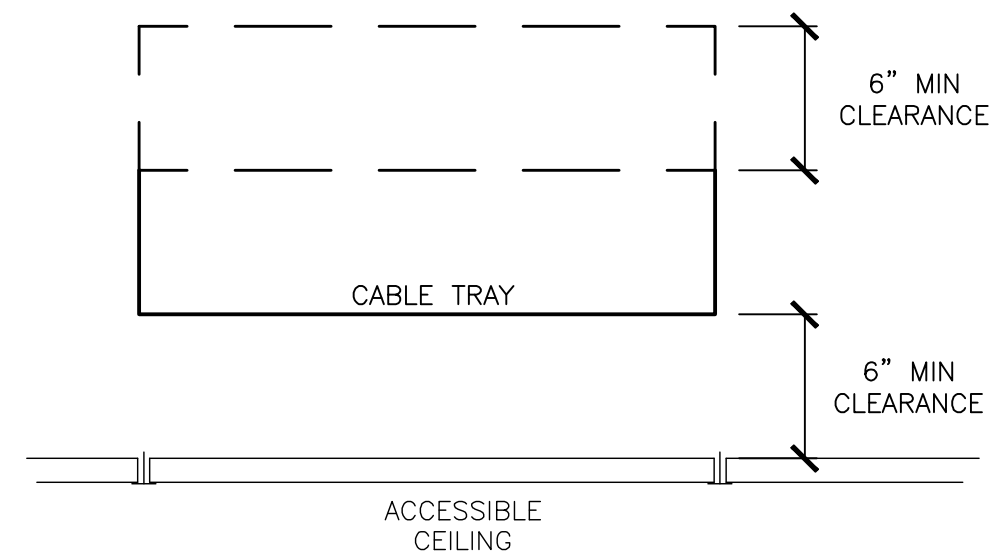
2 LABEL NOMENCLATURE DETAIL
SCALE: NOT TO SCALE



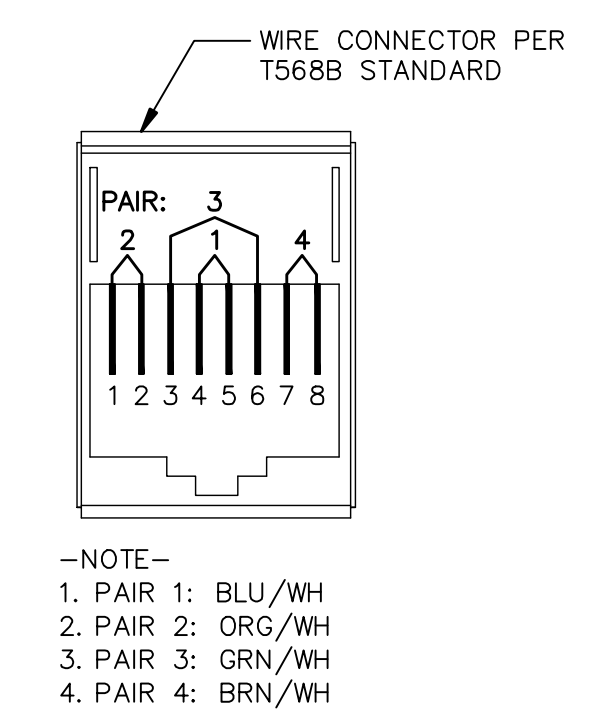
3 TYPICAL HANGER ASSEMBLY DETAIL
SCALE: NOT TO SCALE



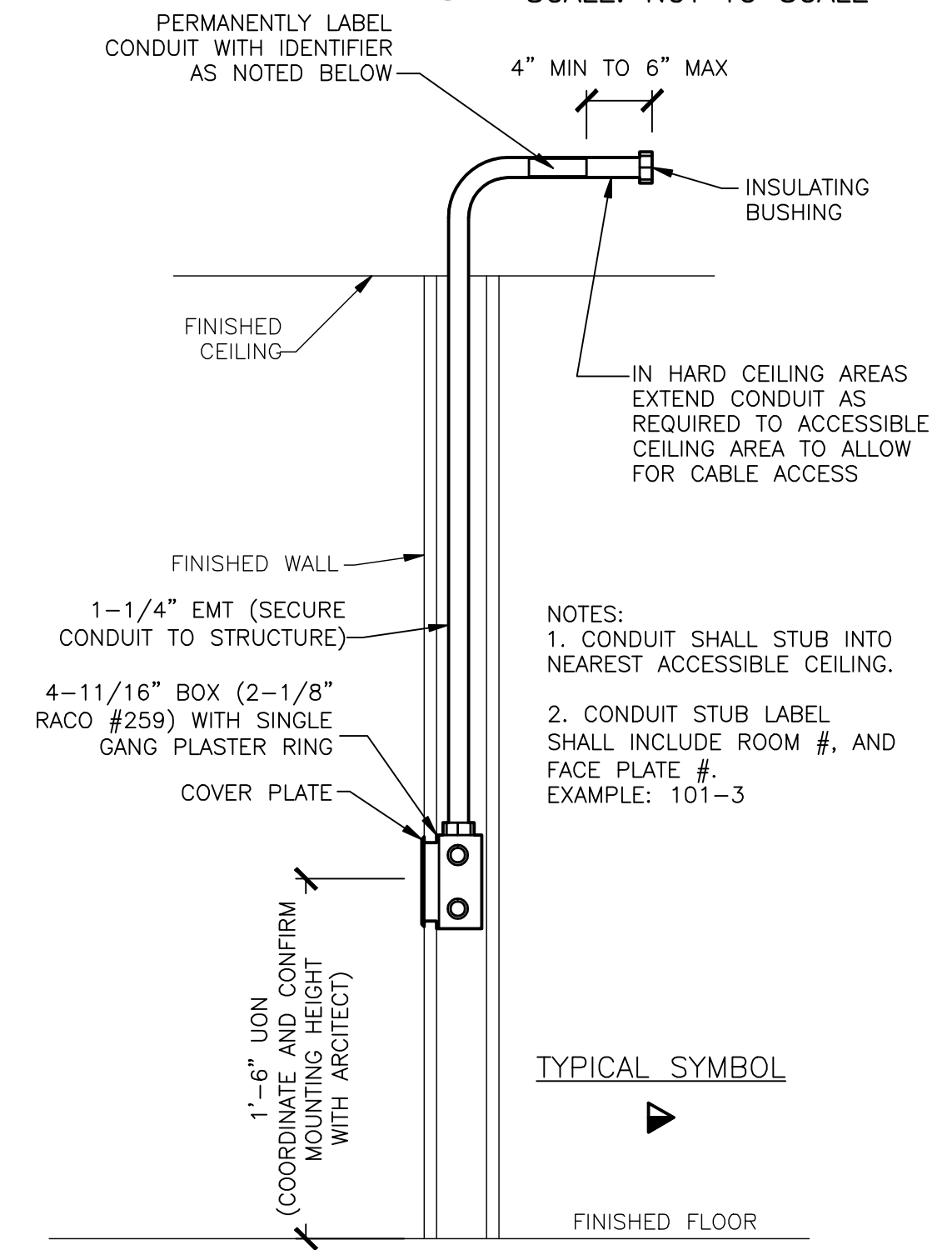
6 TYPICAL CABLE TRAY REQUIREMENTS DETAIL
SCALE: NOT TO SCALE



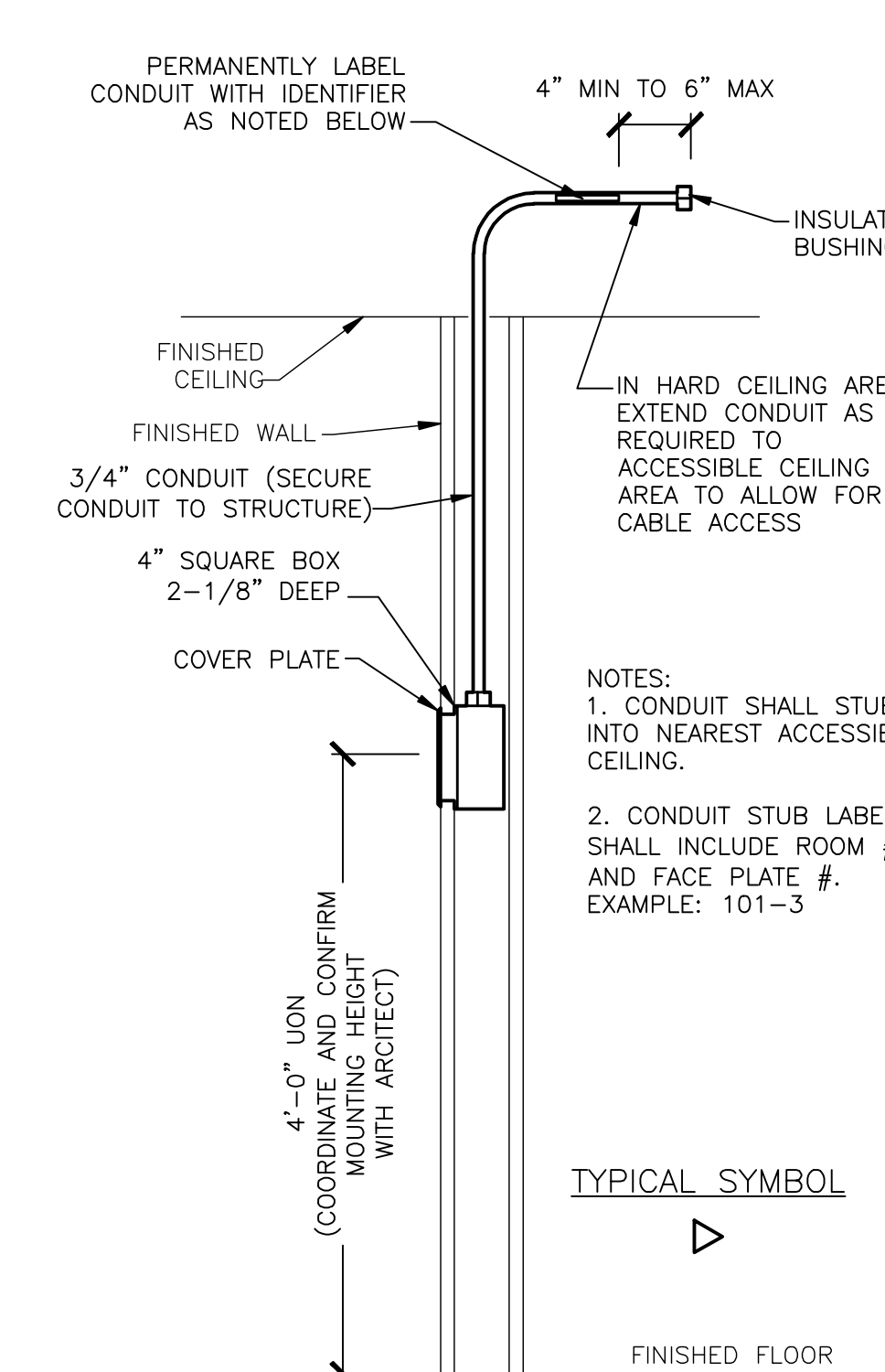
4 TYPICAL PIN OUT DETAIL
SCALE: NOT TO SCALE



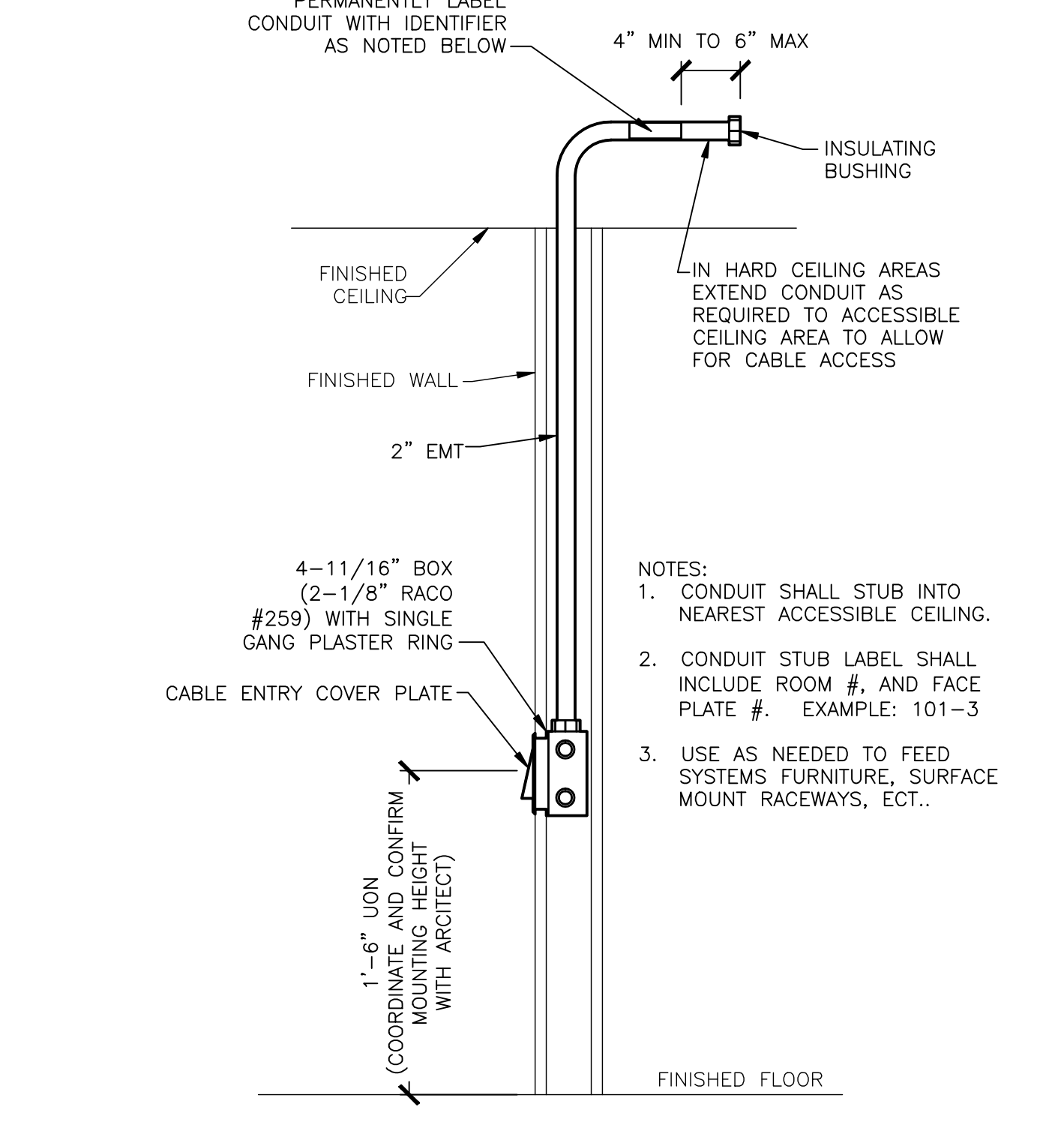
12 TYPICAL TELE / DATA WALL DETAIL
SCALE: NOT TO SCALE



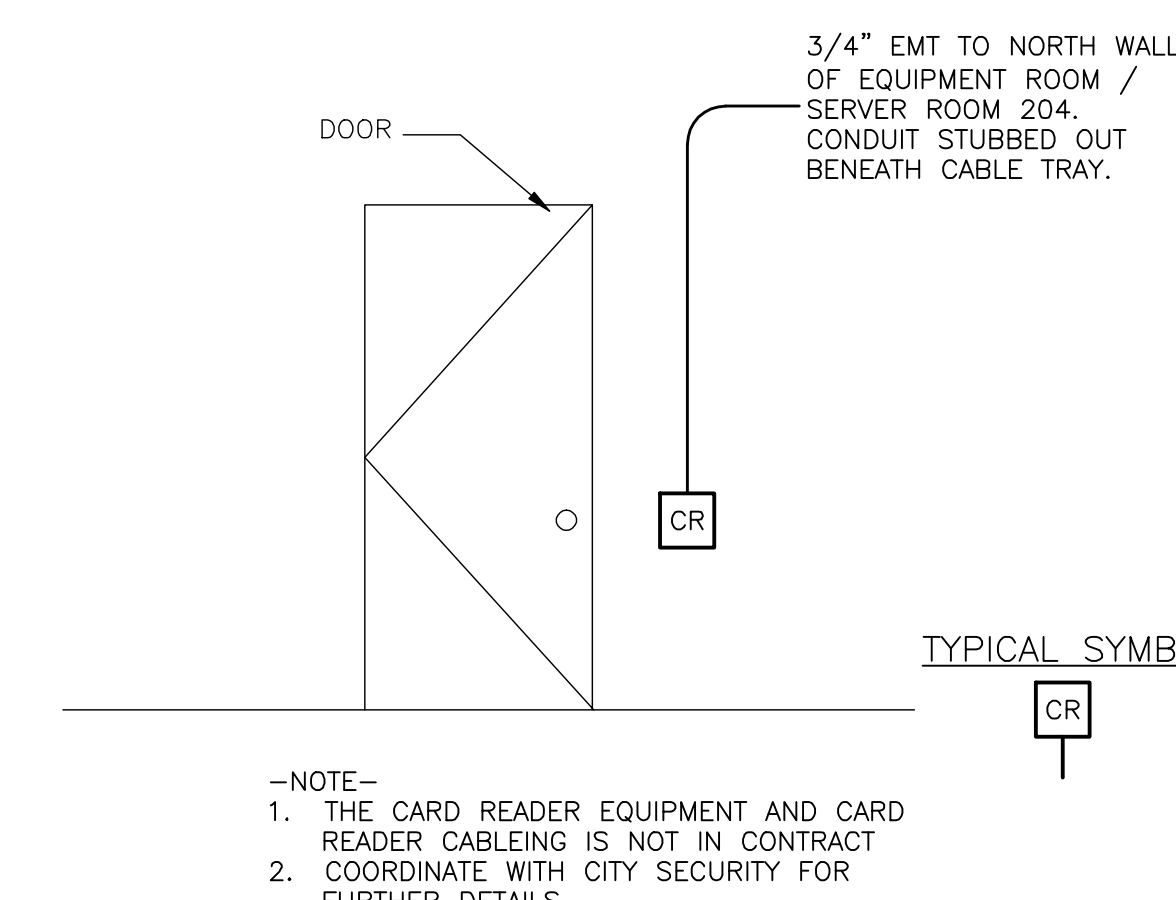
10 TYPICAL WALL PHONE DETAIL
SCALE: NOT TO SCALE



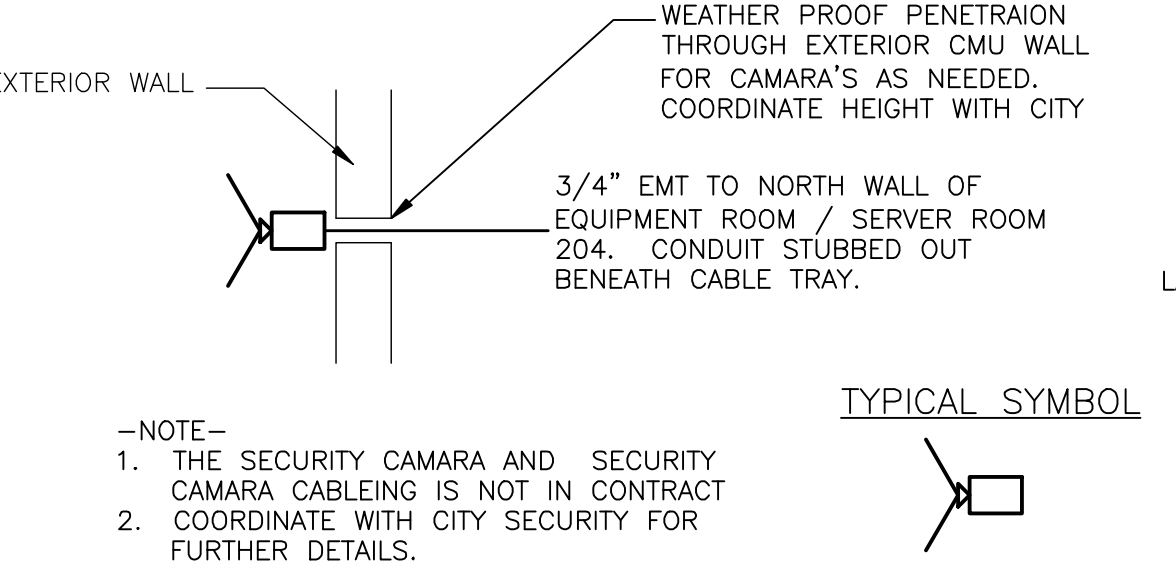
7 TYPICAL CABLE FEED-THROUGH WALL DETAIL
SCALE: NOT TO SCALE



13 TYPICAL CARD READER SCHEMATIC
SCALE: NOT TO SCALE



14 TYPICAL SECURITY CAMARA SCHEMATIC
SCALE: NOT TO SCALE



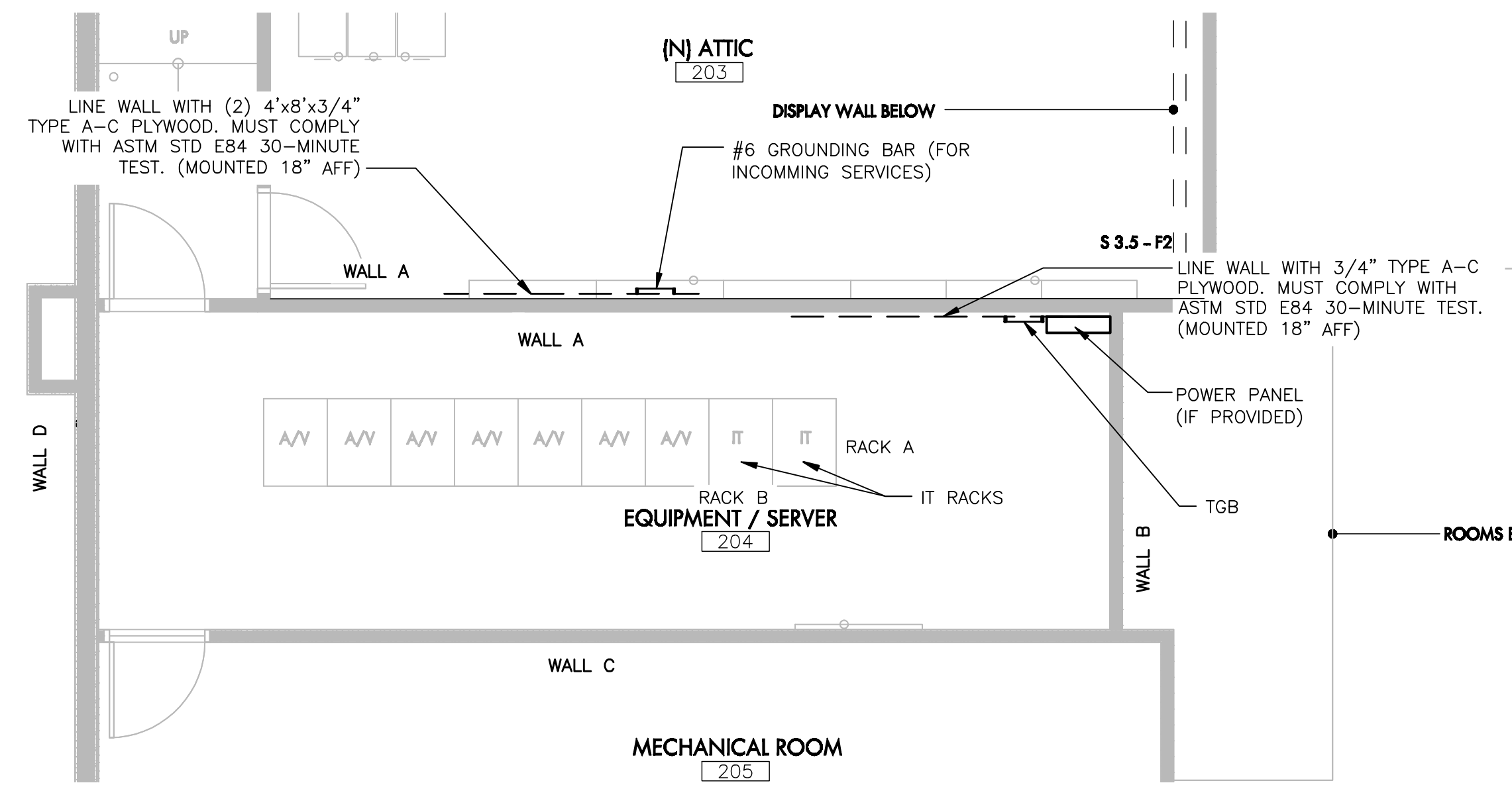
NO	DESCRIPTION	BY	DATE	NO	DESCRIPTION	BY	DATE
1	PLAN CHECK	JLM	06/04/09				
2	PLAN CHECK	JLM	10/09/09				

KEYPLAN
nonzero\architecture
PETER GRUENEISEN, FAIA
1528 B CLOVERFIELD BOULEVARD
SANTA MONICA CALIFORNIA 90404
310 453 8000 telephone
310 453 8001 fax
info@bauton.com
www.nonzeroorch.com
www.bauton.com
Acentech
AV | IT | ACOUSTICS CONSULTANT
8 Interplex Dr, Suite 218
Trevose, PA 19053
Voice: (215) 245-8244
Fax: (215) 245-1796

SANTA MONICA CITY TV
1654 19TH STREET, SANTA MONICA, CA 90404
PROJECT NO. 6619
CITY OF SANTA MONICA
PROJECT NO. 6619

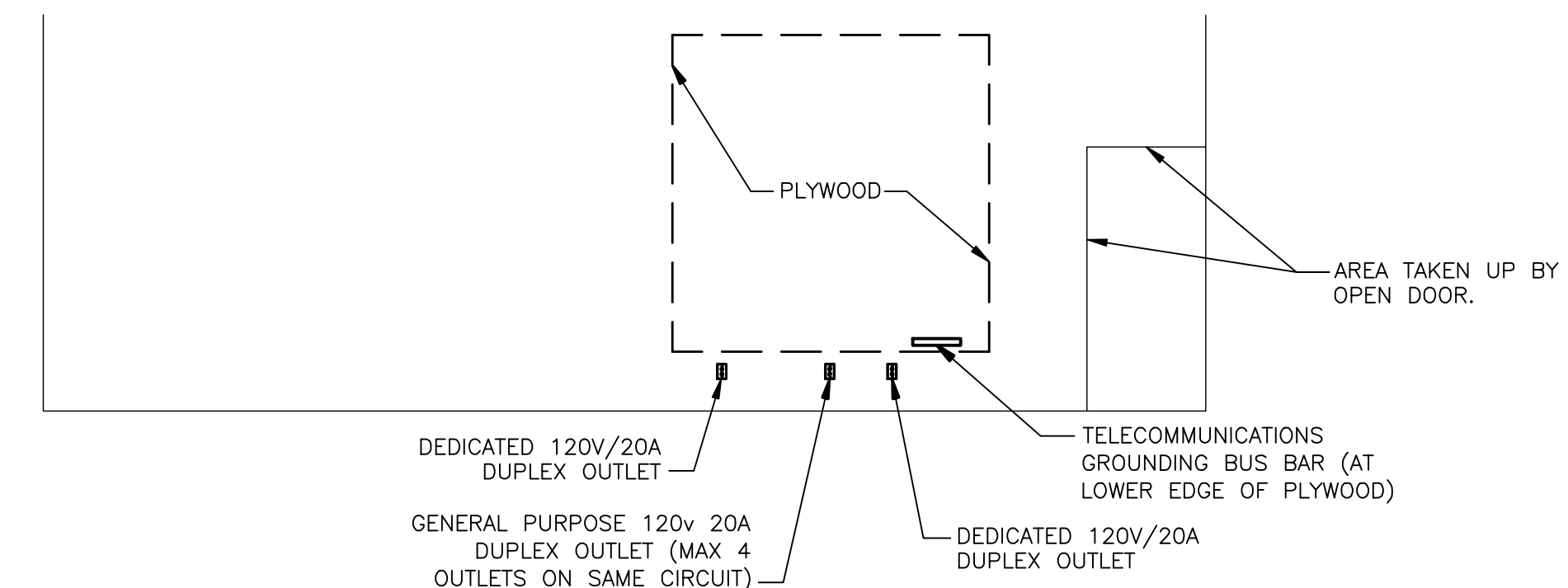
PROJECT: INTERIOR CABLING DETAILS

DATE	01.31.09	PROJECT NO.	12-805
DRAWN	JLM	IT-002	
REVIEWED	EIS		
AS SHOWN			
SCALE		DRAWING NO.	

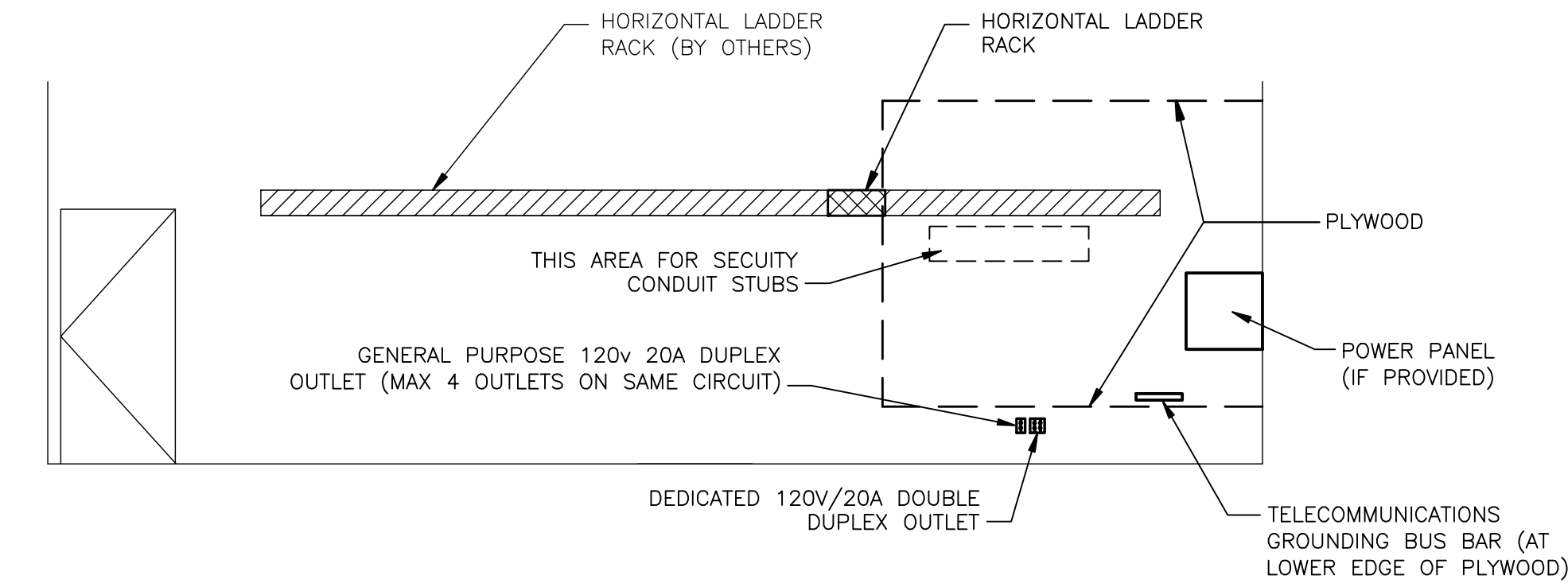


2 EQUIPMENT / SERVER 204 FLOOR PLAN
SCALE: 1/4" = 1'-0"

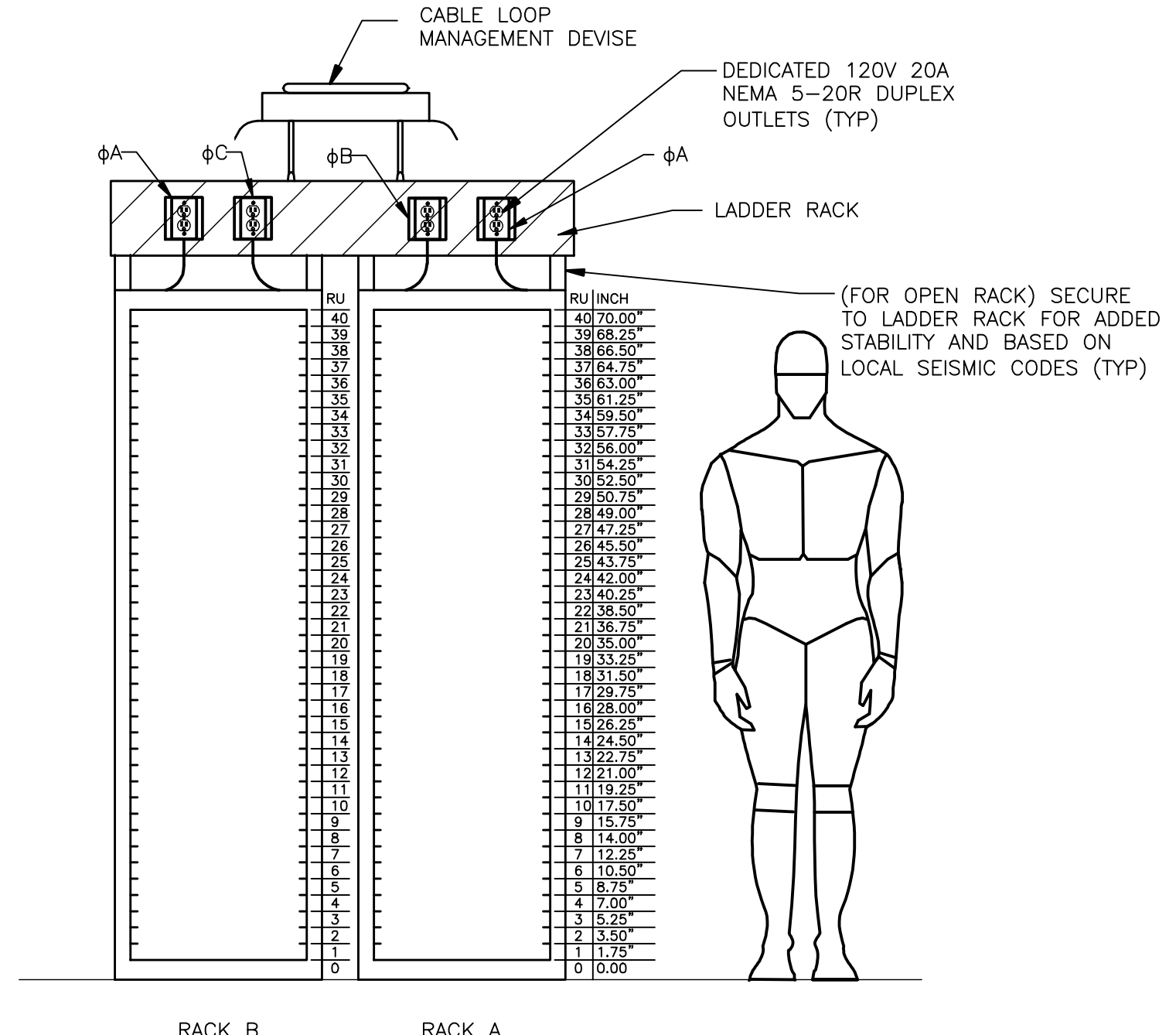
-NOTE-
1. COORDINATE FINAL LAYOUT OF EQUIPMENT SERVER 204 WITH ARCHITECT AND AV SET



8 (N) ATTIC 203 WALL A ELEVATION
SCALE: 1/4" = 1'-0"



3 EQUIPMENT / SERVER 204 WALL A ELEVATION
SCALE: 1/4" = 1'-0"



7 RACK ELEVATION
SCALE: 3/4" = 1'-0"

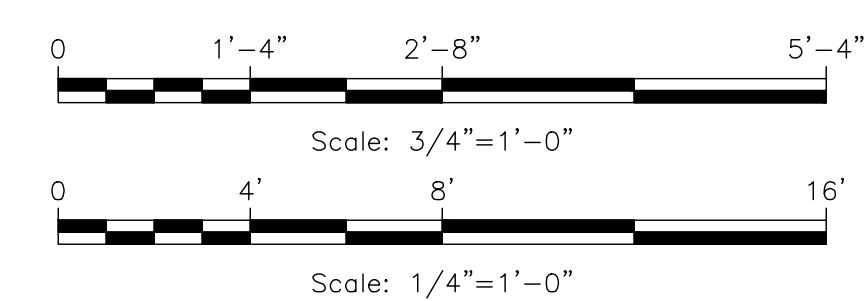
-NOTE-
1. AC OUTLETS MOUNTED ON SIDE OF LADDER RACK
2. OUTLETS WIRED ON SEQUENTIAL AND SEPARATE PHASES FOR EACH RACK

6 EQUIPMENT / SERVER 204 WALL D ELEVATION
SCALE: 1/4" = 1'-0"

4 EQUIPMENT / SERVER 204 WALL B ELEVATION
SCALE: 1/4" = 1'-0"



5 EQUIPMENT / SERVER 204 WALL C ELEVATION
SCALE: 1/4" = 1'-0"



NO	DESCRIPTION	BY	DATE	NO	DESCRIPTION	BY	DATE
1	PLAN CHECK	JLM	06/04/09				
2	PLAN CHECK	JLM	10/09/09				

KEYPLAN

nonzero\architecture
PETER GRUENEISEN, FAIA

1528 B CLOVERFIELD BOULEVARD
SANTA MONICA CALIFORNIA 90404

310 453 8000 telephone
310 453 8001 fax

info@bauton.com
www.nonzeroarch.com
www.bauton.com

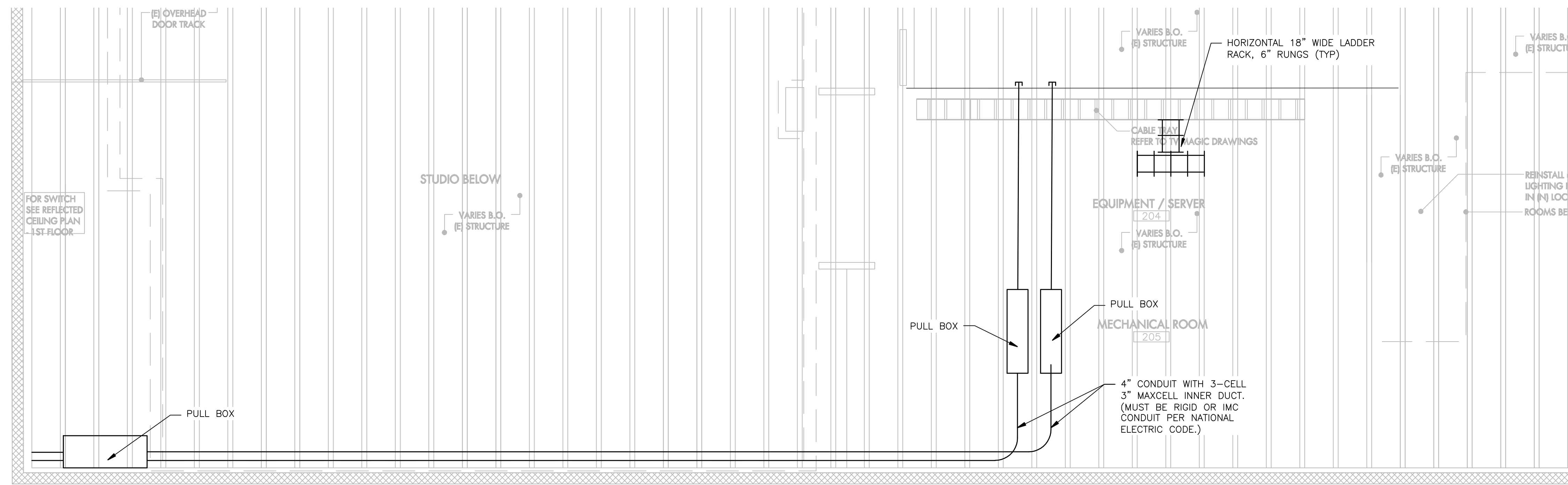
Acentech
AV | IT | ACOUSTICS CONSULTANT
8 Interplex Dr; Suite 218
Trevose, PA 19053
Voice: (215) 245-8244
Fax: (215) 245-1796

SANTA MONICA CITY TV
1654 19TH STREET, SANTA MONICA, CA 90404

CITY OF SANTA MONICA
PROJECT NO. 6619

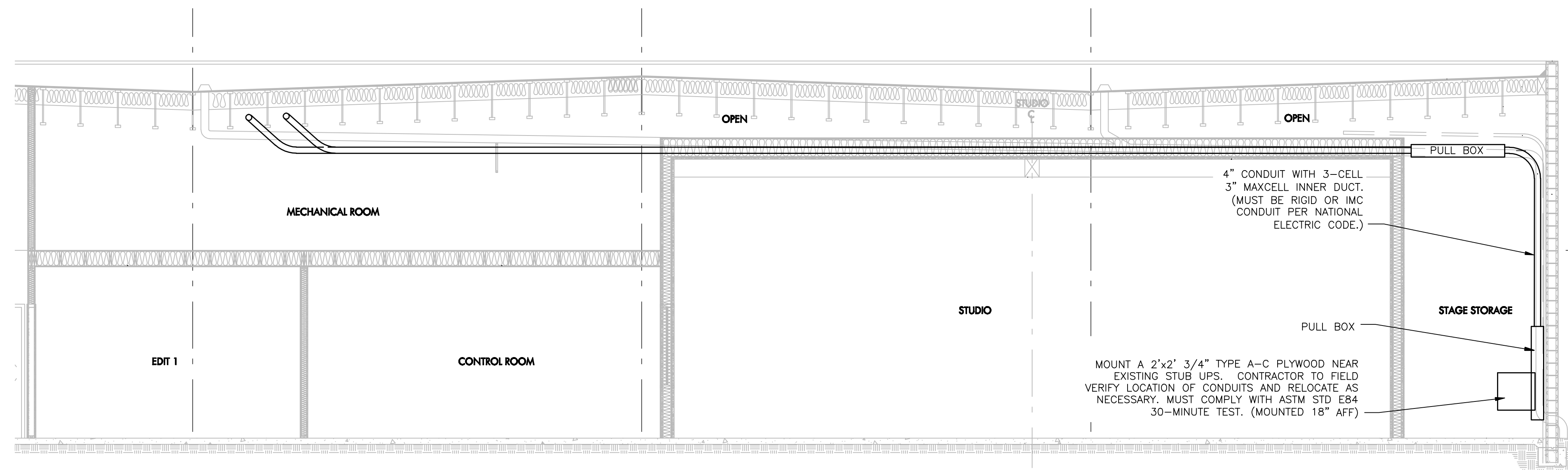
PROJECT
ATTIC - MECHANICAL AREA
DRAWING
LEVEL TELECOM ROOM

DATE	01.31.09	PROJECT NO.	12-805
DRAWN	JLM	IT-401	
REVIEWED	EIS		
SCALE	AS SHOWN		
STAMP		DRAWING NO.	

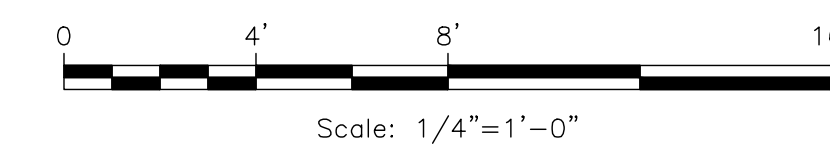


1 BACKBONE CABLE ROUTING PLAN
SCALE: 1/4" = 1'-0"

-NOTE-
1. COORDINATE FINAL LAYOUT OF EQUIPMENT SERVER 204 WITH ARCHITECT AND AV SET



2 BACKBONE CABLE ROUTING ELEVATION
SCALE: 1/4" = 1'-0"



NO	DESCRIPTION	BY	DATE	NO.	DESCRIPTION	BY	DATE
1	PLAN CHECK	JLM	06/04/09				
2	PLAN CHECK	JLM	10/09/09				

KEYPLAN

nonzero\architecture
PETER GRUENEISEN, FAIA

1528 B CLOVERFIELD BOULEVARD
SANTA MONICA CALIFORNIA 90404

310 453 8000 telephone
310 453 8001 fax

info@bauton.com
www.nonzeroorch.com
www.bauton.com

Acentech
AV | IT | ACOUSTICS CONSULTANT
8 Interplex Dr, Suite 218
Trevose, PA 19053
Voice: (215) 245-8244
Fax: (215) 245-1796

SANTA MONICA CITY TV
1654 19TH STREET, SANTA MONICA, CA 90404

CITY OF SANTA MONICA
PROJECT NO. 6619

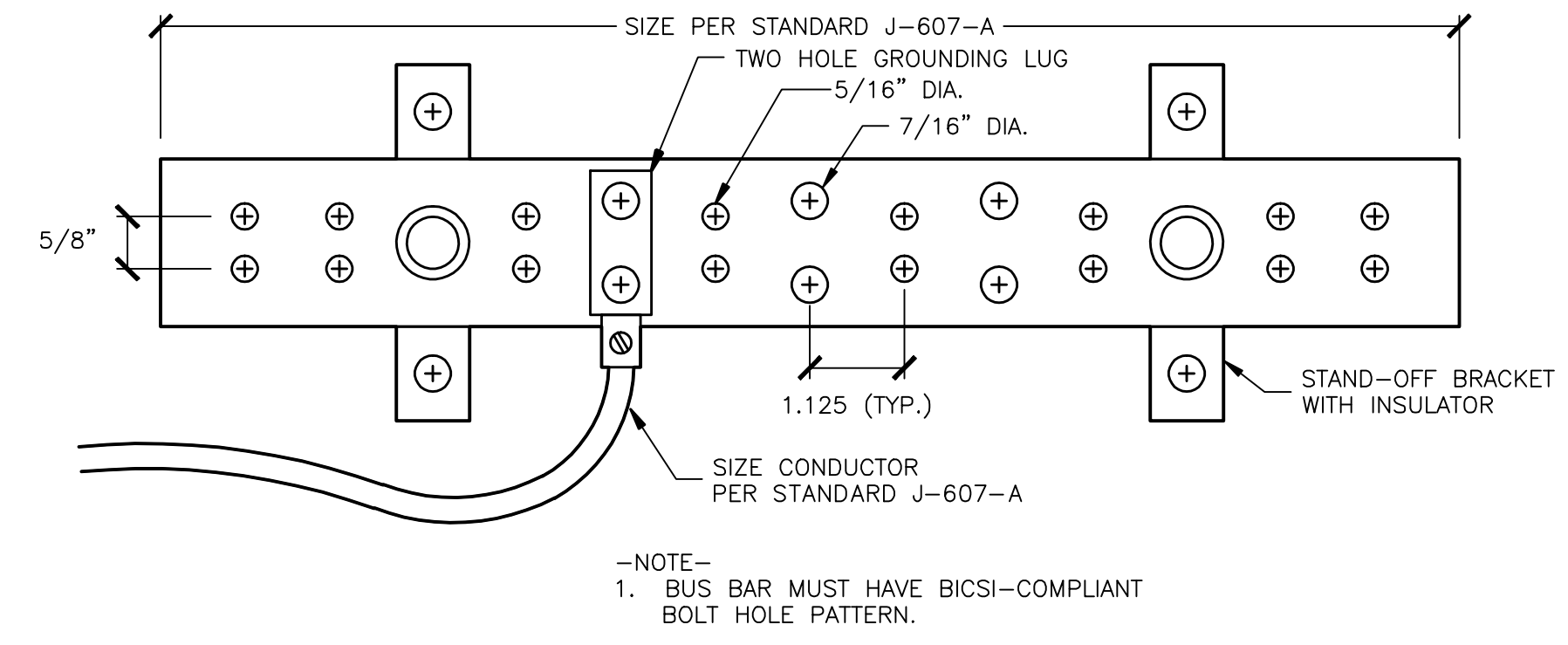
PROJECT

BACKBONE CABLE PATHWAY

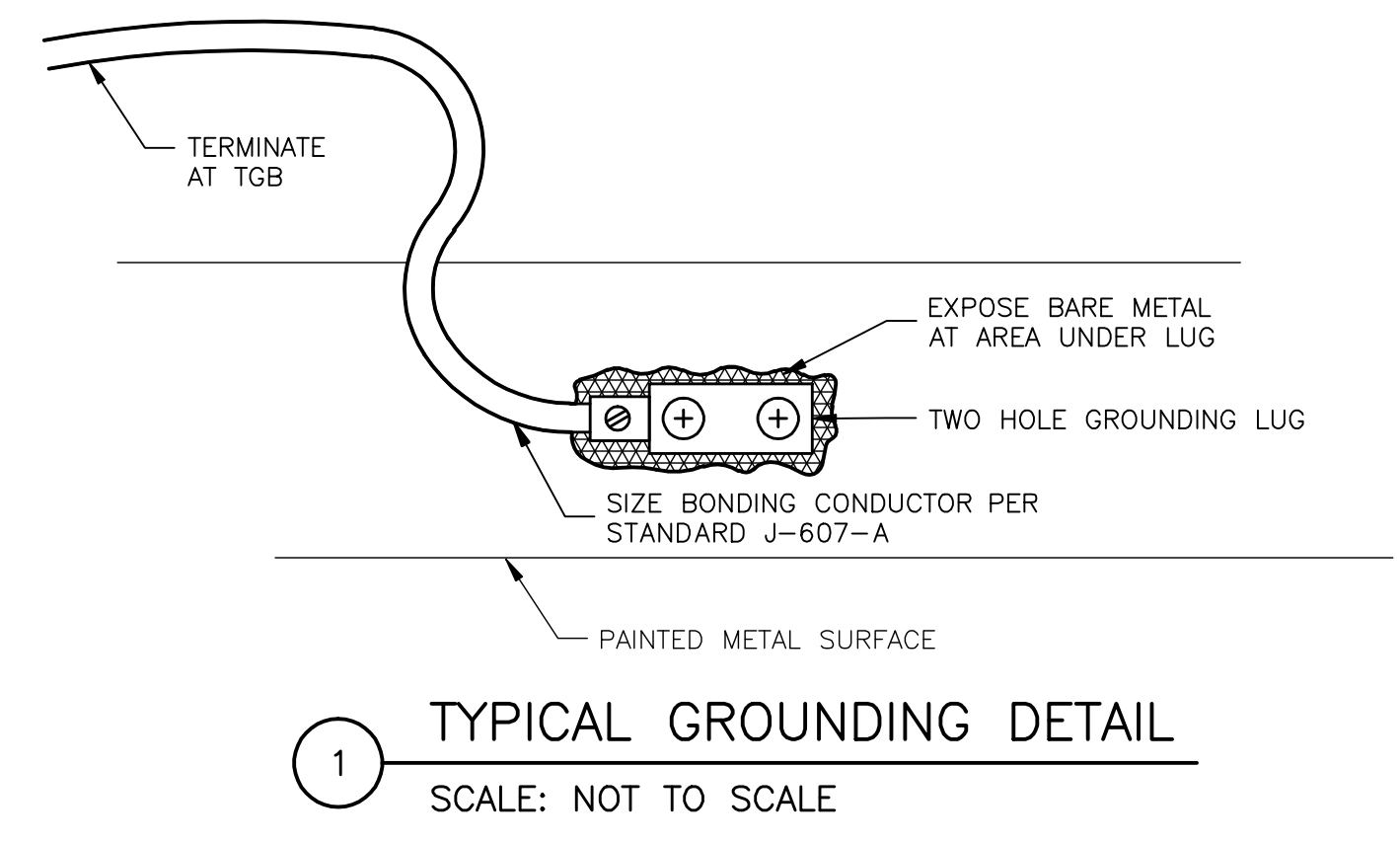
DRAWING

DATE	01.31.09	PROJECT NO.	12-805
DRAWN	JLM	IT-402	DRAWING NO.
REVIEWED	EIS		
AS SHOWN	SCALE		

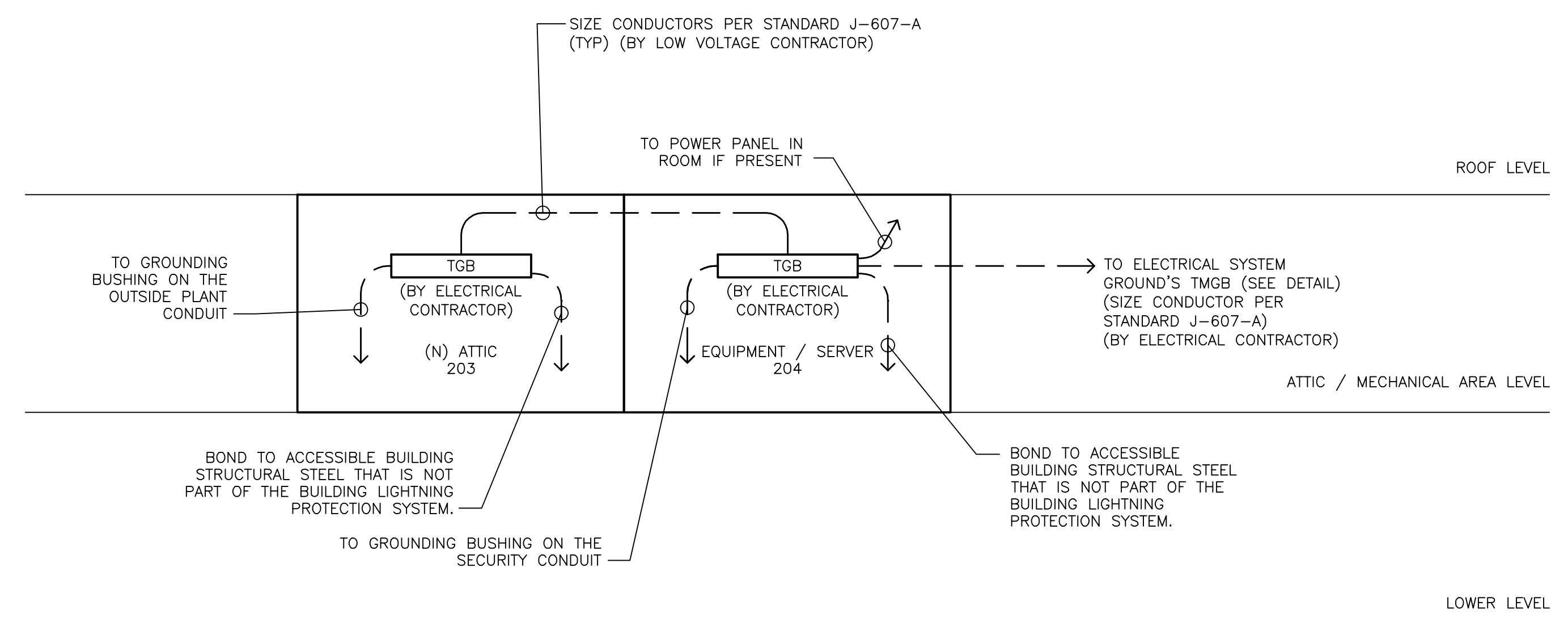
STAMP



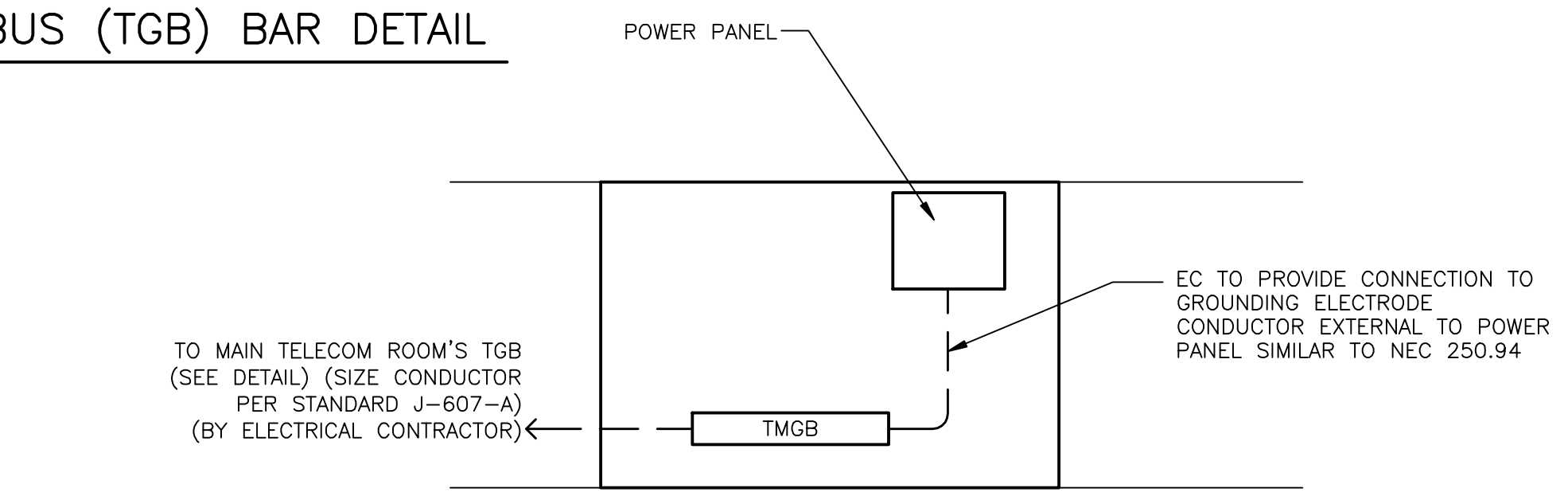
2 TYPICAL TELECOMMUNICATIONS GROUNDING BUS (TGB) BAR DETAIL
SCALE: NOT TO SCALE



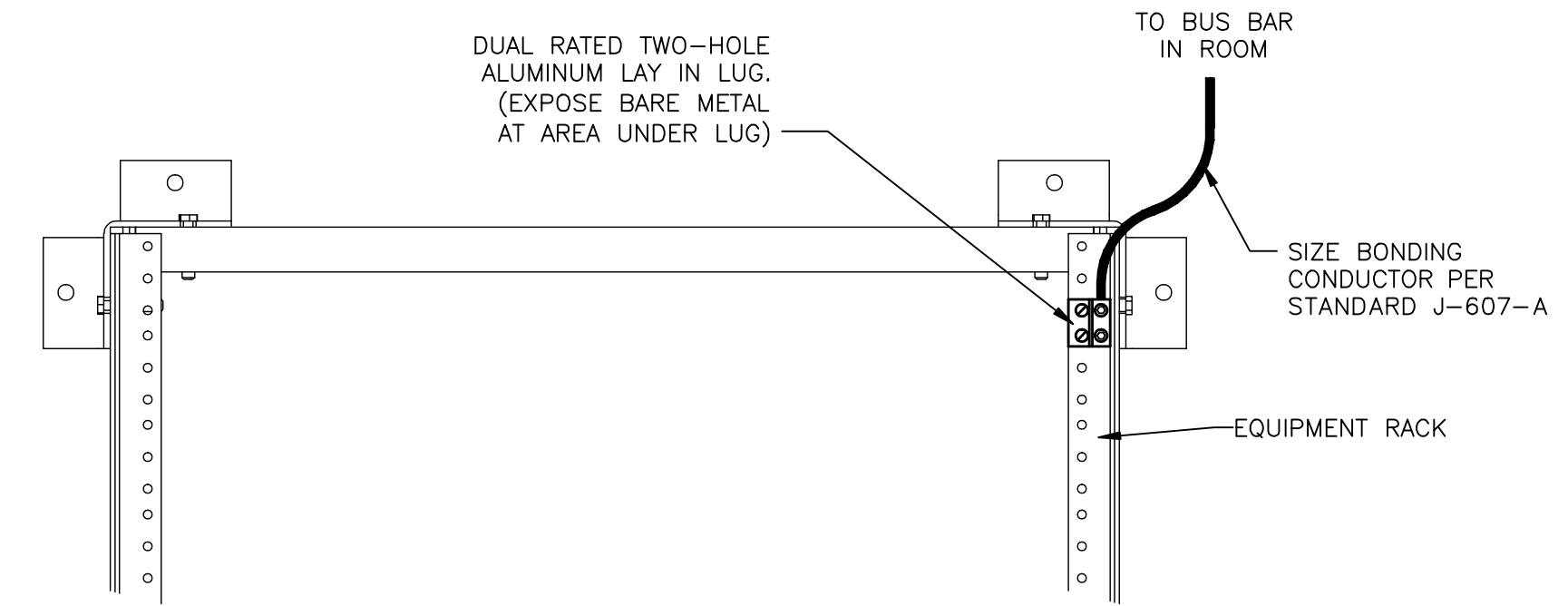
1 TYPICAL GROUNDING DETAIL
SCALE: NOT TO SCALE



3 BUILDING GROUNDING BUS BAR SCHEMATIC
SCALE: NOT TO SCALE



4 MAIN ELECTRICAL SERVICE ENTRANCE TELECOM GROUND POINT SCHEMATIC
SCALE: NOT TO SCALE



5 TYPICAL RACK GROUNDING DETAIL
SCALE: NOT TO SCALE

-NOTES-
1. IF STRUCTURAL STEEL NOT ACCESSIBLE OR NOT PRESENT DELETE REQUIREMENT TO GROUND BUS BAR TO STRUCTURAL STEEL

-NOTES-
1. MOUNT LUG ON BACK OF RACK TO AVOID TAKING UP SPACE ALLOCATED FOR EQUIPMENT.

THESE DOCUMENTS AND THEIR CONTENT CONTAIN INFORMATION PROPRIETARY TO nonzero\architecture AND ARE PROTECTED BY LEGAL COPYRIGHTS. ALL RIGHTS RESERVED. © nonzero\architecture

studio bauton
AUDIOVISUAL FACILITIES

NO	DESCRIPTION	BY	DATE	NO.	DESCRIPTION	BY	DATE
1	PLAN CHECK	JLM	06/04/09				
2	PLAN CHECK	JLM	10/09/09				

KEYPLAN

nonzero\architecture
PETER GRUENEISEN, FAIA

1528 B CLOVERFIELD BOULEVARD
SANTA MONICA CALIFORNIA 90404

310 453 8000 telephone
310 453 8001 fax

info@bauton.com
www.nonzeroorch.com
www.bauton.com

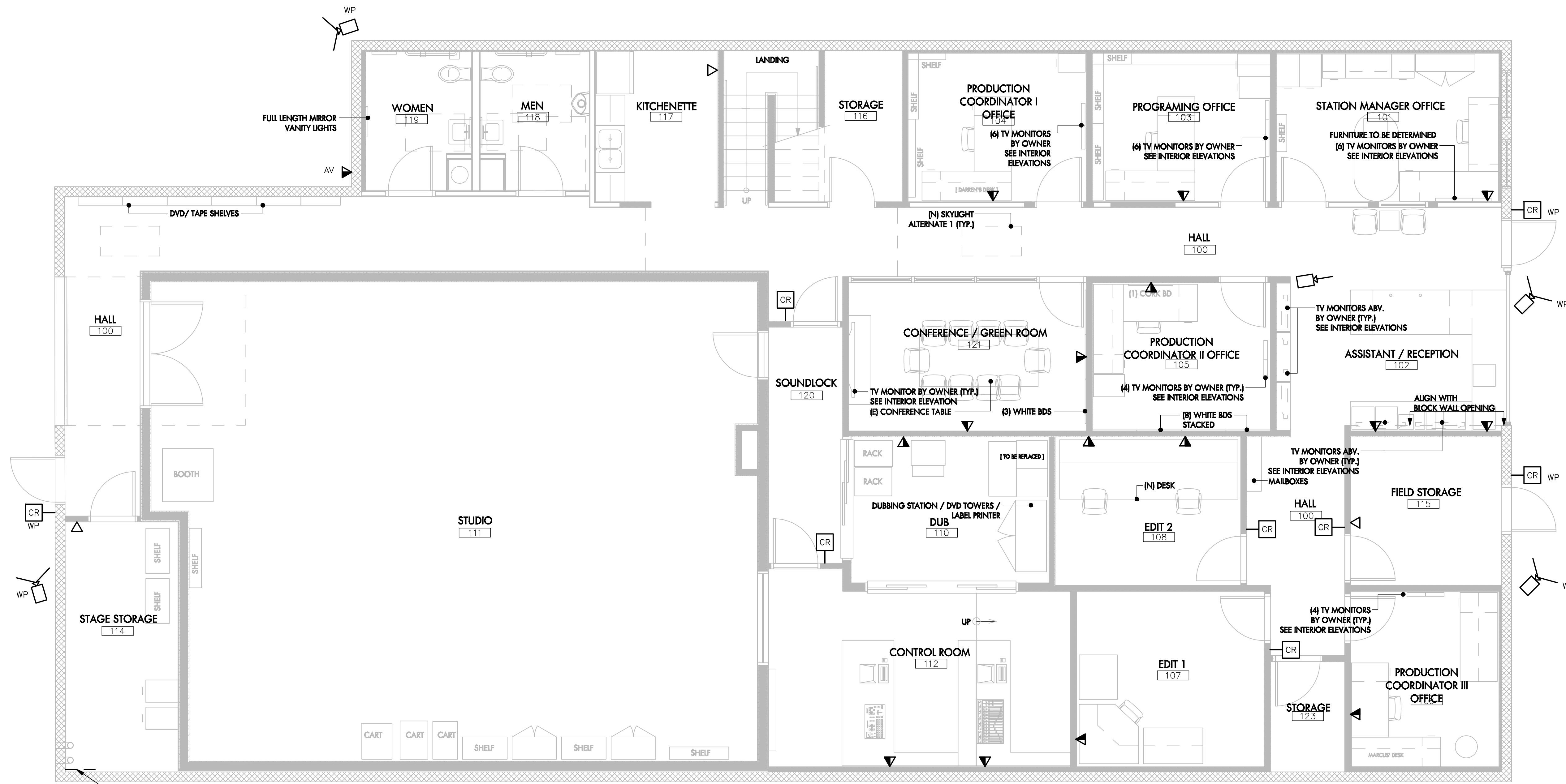
Acentech
AV | IT | ACOUSTICS CONSULTANT
8 Interplex Dr, Suite 218
Trevose, PA 19053
Voice: (215) 245-8244
Fax: (215) 245-1796

SANTA MONICA CITY TV
1654 19TH STREET, SANTA MONICA, CA 90404
CITY OF SANTA MONICA
PROJECT NO. 6619

PROJECT
TELECOM GROUNDING AND BONDING SCHEMATIC SHEET

DATE	01.31.09	PROJECT NO.	12-805
DRAWN	JLM	IT-540	DRAWING NO.
REVIEWED	EIS		
SCALE	AS SHOWN		

STAMP



MOUNT A 2'x2' 3/4" TYPE A-C PLYWOOD NEAR EXISTING STUB UPS. CONTRACTOR TO FIELD VERIFY LOCATION OF CONDUITS AND RELOCATE AS NECESSARY. MUST COMPLY WITH ASTM STD E84 30-MINUTE TEST. (MOUNTED 18" AFF)

NO	DESCRIPTION	BY	DATE	NO	DESCRIPTION	BY	DATE
1	PLAN CHECK	JLM	06/04/09				
2	PLAN CHECK	JLM	10/09/09				

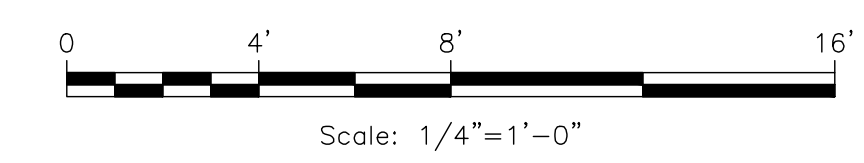
KEYPLAN
nonzero\architecture
PETER GRUENEISEN, FAIA
1528 B CLOVERFIELD BOULEVARD
SANTA MONICA CALIFORNIA 90404
310 453 8000 telephone
310 453 8001 fax
info@ba:ton.com
www.nonzeroarch.com
www.ba:ton.com

Acentech
AV | IT | ACOUSTICS CONSULTANT
8 Interplex Dr, Suite 218
Trevose, PA 19053
Voice: (215) 245-8244
Fax: (215) 245-1796

SANTA MONICA CITY TV
1654 19TH STREET, SANTA MONICA, CA 90404
PROJECT NO. 6619

1 FIRST FLOOR PLAN
SCALE: 1/4" = 1'-0"

- GENERAL NOTES—
- CARD READER EQUIPMENT, SECURITY CAMERAS, AND SECURITY EQUIPMENT IS NOT IN CONTRACT.
 - CABLING FOR CARD READER AND SECURITY CAMERAS IS NOT IN CONTRACT.
 - CONTRACTOR TO COORDINATE HEIGHT OF SECURITY CAMERAS WITH CITY.
 - SEE DETAILS FOR INSTALLATION REQUIREMENTS OF SECURITY DEVICES.
 - SEE ATTIC / MECHANICAL LEVEL TELECOM ROOM SHEET FOR FURTHER SECURITY REQUIREMENTS



PROJECT		FIRST FLOOR PLAN	
DATE	01.31.09	PROJECT NO.	12-805
DRAWN	JLM	IT-600	DRAWING NO.
REVIEWED	EIS		
SCALE	AS SHOWN		

STAMP

NO	DESCRIPTION	BY	DATE	NO	DESCRIPTION	BY	DATE
1	PLAN CHECK	JLM	06/04/09				
2	PLAN CHECK	JLM	10/09/09				

KEYPLAN

nonzero\architecture
PETER GRUENEISEN, FAIA

1528 B CLOVERFIELD BOULEVARD
SANTA MONICA CALIFORNIA 90404

310 453 8000 telephone
310 453 8001 fax

info@bauton.com
www.nonzeroarch.com
www.bauton.com

Acentech
AV | IT | ACOUSTICS CONSULTANT
8 Interplex Dr, Suite 218
Trevose, PA 19053
Voice: (215) 245-8244
Fax: (215) 245-1796

SANTA MONICA CITY TV
1654 19TH STREET, SANTA MONICA, CA 90404

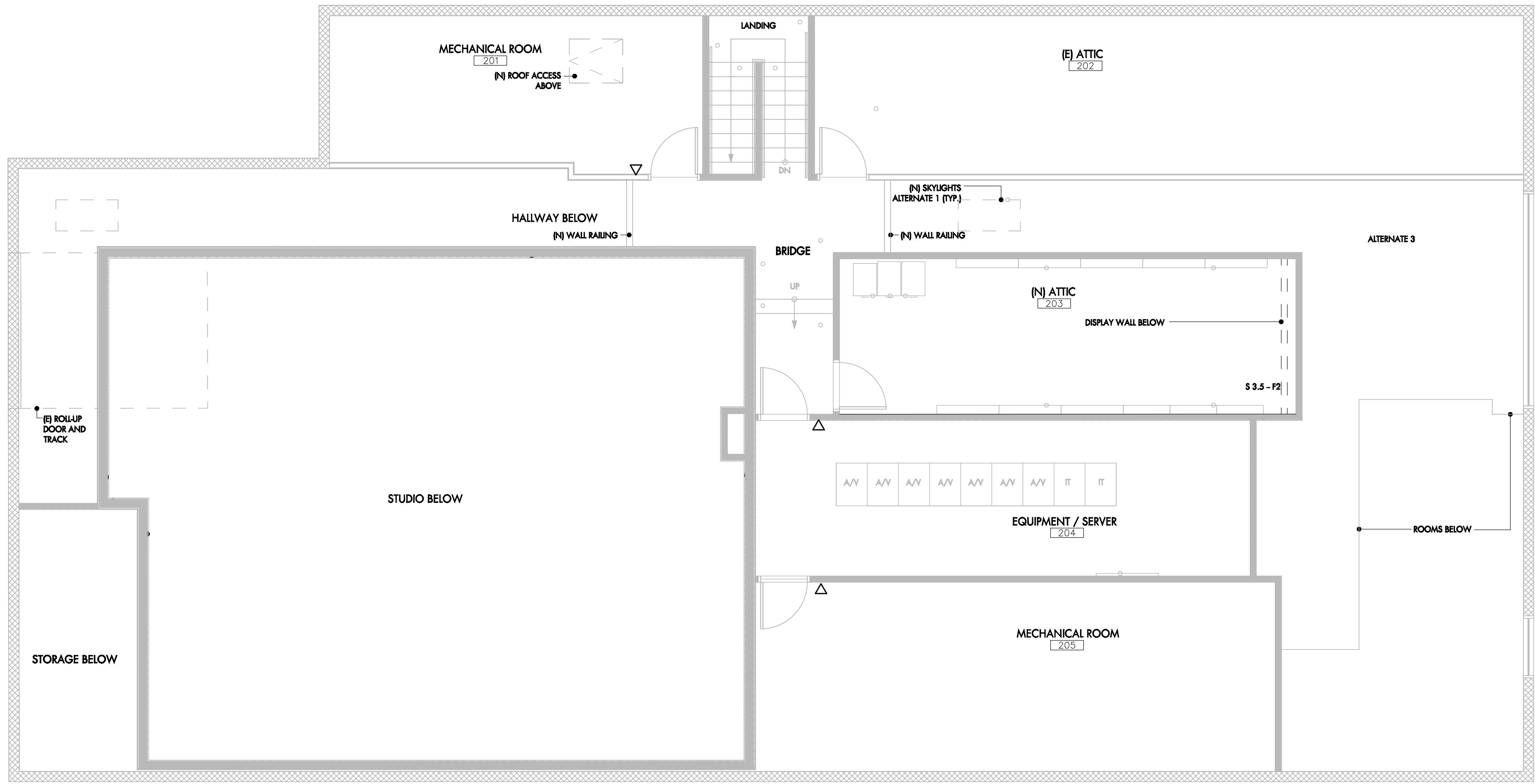
CITY OF SANTA MONICA
PROJECT NO. 6619

PROJECT

ATTIC - MECHANICAL AREA
FLOOR PLAN

DRAWING

	01.31.09	12-805
DATE	PROJECT NO.	
JLM DRAWN	IT-601	
EIS REVIEWED		
AS SHOWN SCALE		
STAMP	DRAWING NO.	



1 ATTIC / MECHANICAL AREA FLOOR PLAN
SCALE: 1/4" = 1'-0"

